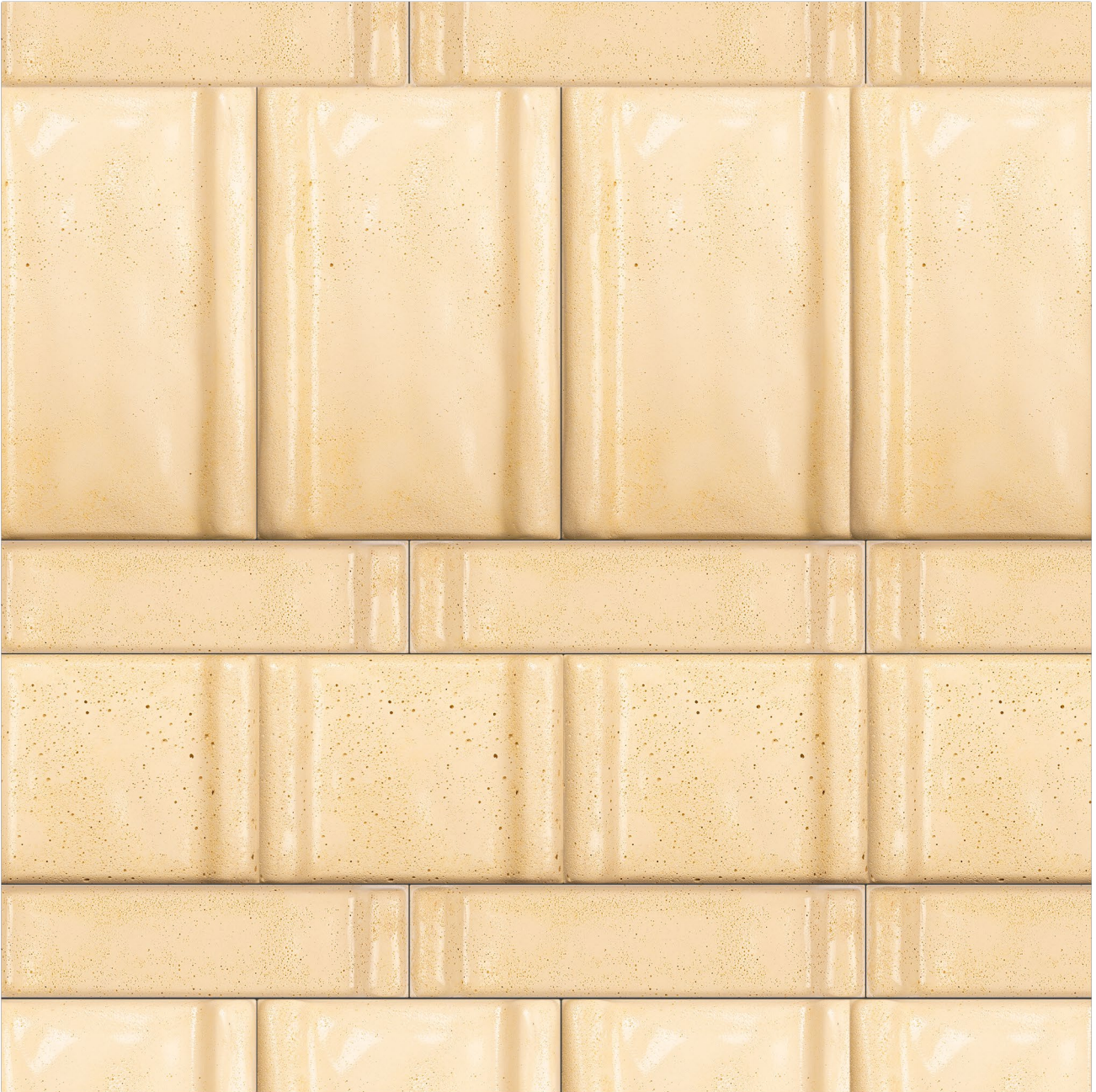


CIMENTO®



CIMENTO® FORMELLE RIVA

Product data sheet

design by
Patricia Urquiola

Description

CIMENTO® FORMELLE are a product from the **CIMENTO®** range designed to allow the cladding of pre-existing structures. The tiles are made of a cement agglomerate. **CIMENTO® FORMELLE** is a non-combustible product.

Intended use

CIMENTO® FORMELLE are intended for covering indoor and outdoor vertical surfaces. In order to preserve the aesthetic and functional conditions of the **CIMENTO®** surface for as long as possible, we recommend referring to the methods and precautions for use indicated in the installation and maintenance manual for **CIMENTO® FORMELLE**.

Note

The installation must be carried out by specialized personnel, anchoring the tiles to the underlying structure using specific adhesives and following the instructions specifically indicated in the respective technical data sheets.

For detailed information regarding installation, design and maintenance, please refer to the appropriate manuals. Also contact the **CIMENTO®** sales office.

Cleaning and Maintenance

Do not use chemicals, abrasive cleaners, solvents and polishing products. The **CIMENTO®** surface is treated with a protective system that prevents the penetration of dirt, whether dry, humid or greasy, and facilitates cleaning operations.

The characteristic co-presence of smooth and porous parts requires some simple precautions during ordinary cleaning. It is important to prevent dirt and deposits from moving and accumulating in the porous portions, especially in the case of humid or greasy substances.

For ordinary maintenance we recommend the following operations, to be carried out in order:

1. First remove all dry deposits with a vacuum cleaner or a soft bristle brush, removing dust and solid residues from both the smooth and porous areas of the surface.
2. Rub the surface with a microfibre cloth moistened with a solution of water and neutral detergent, then dry if necessary with another clean, dry microfibre cloth to avoid leaving streaks.

If the surface comes into contact with staining substances, act promptly on the affected area with a cloth moistened with ammonia solutions or similar products (avoiding degreasers that require abundant rinsing) then dry with a clean, dry cloth. Do not use aggressive acid-based, solvent-based or abrasive agents.

Any variations compared to the sample are not to be considered defects but rather as a natural characteristic of the product. Therefore Sai Industry srl does not assume any responsibility in case of variations; they are not to be considered defects and are not covered by warranty, particularly for products purchased at different times.

Storage

Protect the edges and corners from impacts with special protections to avoid possible chipping. Protect the tile, by storing it in the appropriate packaging, from contact with staining substances, blades and sharp or scratching objects which could damage the **CIMENTO®** finish. Store the tiles on a flat, level and dry surface, ensuring uniform support over the entire surface. It is possible to overlap packages of the same size. Do not place other materials on top of the packaging that could damage the packaging or the tiles.

Characteristics of CIMENTO® FORMELLE

The **CIMENTO® FORMELLE** are available in three different models or, upon customer request, they can be made according to the project specifications.

dimension	weight	thickness
Big CRVFO01	1.48 kg	35 mm
Medium CRVFO02	0,68 kg	35 mm
Small CRVFO03	0,5 kg	35 mm

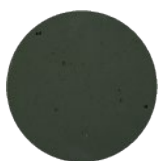
Available finishes and colors

The **CIMENTO® FORMELLE** are available in a wide range of standard colors obtained with the use of natural oxide-based pigments, thanks to which high color stability in light is achieved.

STANDARD COLORS



burro

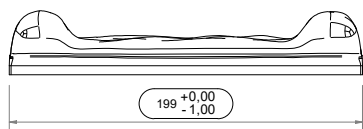
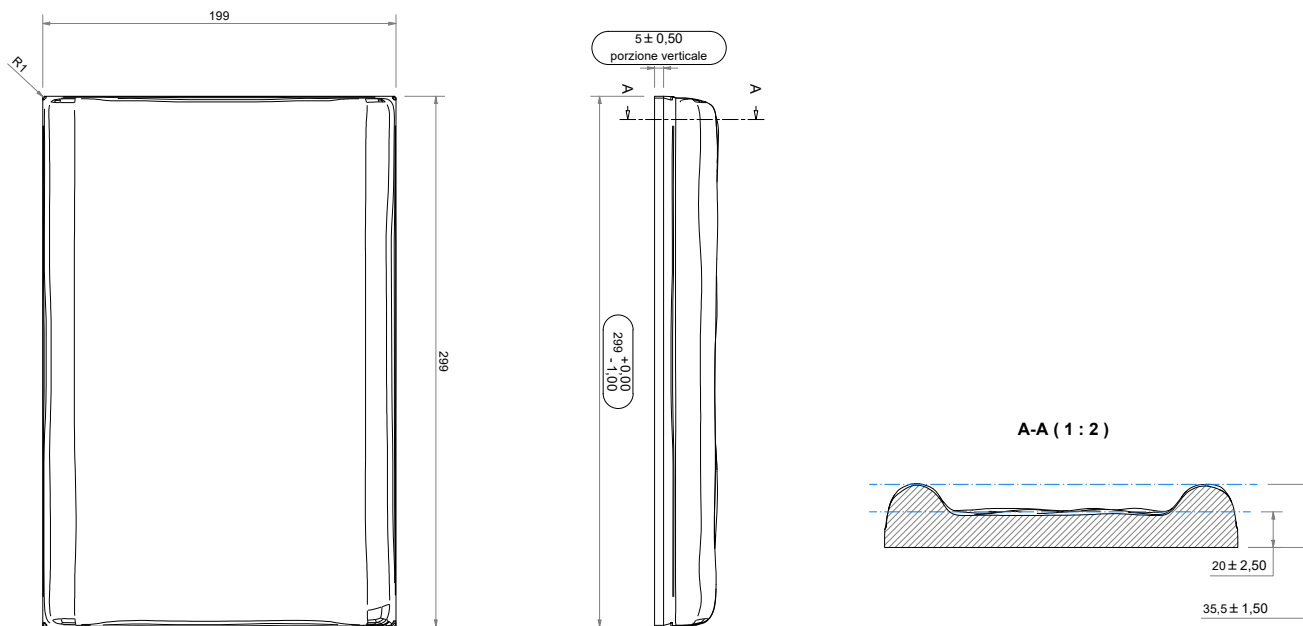


bosco



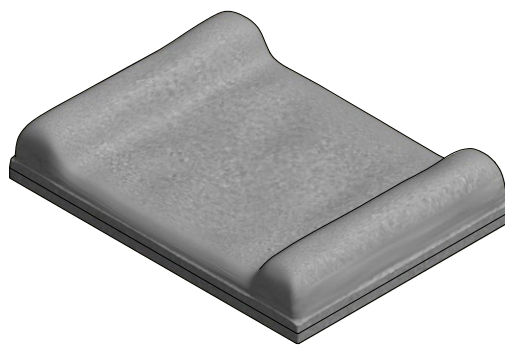
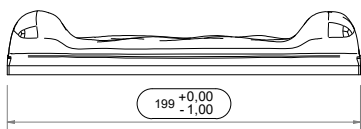
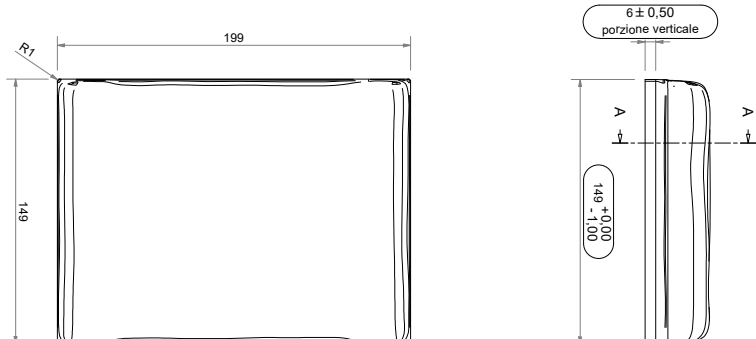
vinaccia

Technical drawing

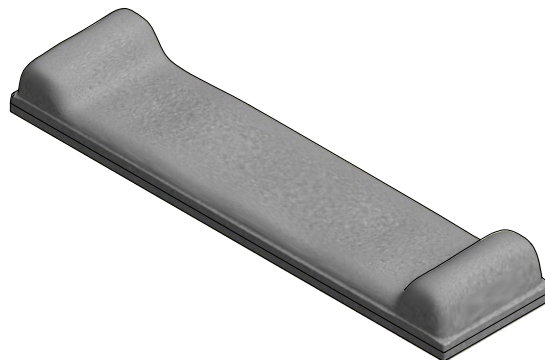
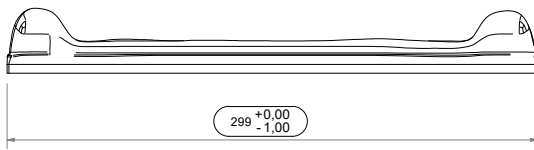
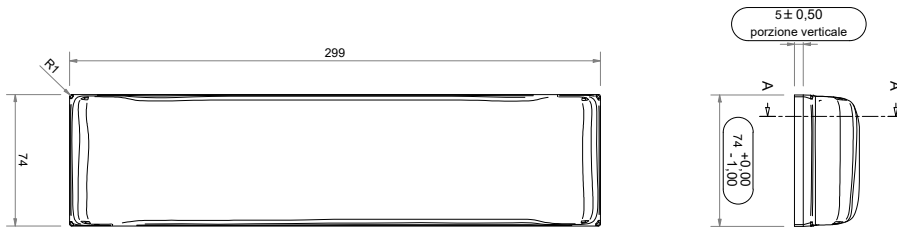


REV	DATE	DRAWER	DESCRIPTION	NOTICE					
CIMENTO® <small>Via J.F.Kennedy, 107 30027 San Donà di Piave VENEZIA - ITALY T. +39 0421 65422 F. +39 0421 308084 info@cimento.tech www.cimento-collection.com</small>			DESCRIPTION: RIVA FORMELLA-CIMENTO-CIMENTO - VEDI TABELLA FINITURE-DIM.299x199xH						
MATERIAL: CIMENTO			FINISHING: CIMENTO - VEDI TABELLA FINITURE						
GENERAL TOLERANCE UNI EN 22768 m MAX LINEAR DEVIATION mm			DATE: 02/05/2024	APPROVED:					
0.5-3	3-6	6-30	30-120	120-400	400-1000	1000-2000	WEIGHT:	N/A	AREA mq:
± 0.1	± 0.1	± 0.2	± 0.3	± 0.5	± 0.8	± 1.2	SCALE:	1 : 2	REFERENCE:
<small>Reproduction or publication of this document, in whole or in part, shall be subject to prior authorization by SAI Industry srl (Art. 2578 of Law no. 633 dated 22/04/41 of the C.C.).</small>			DRAWER: MN	N°TAV: 1	FORM. TAV. A2	CODE: CRVFO01-V00			

Technical drawing



REV	DATE	DRAWER	DESCRIPTION	NOTICE						
			CIMENTO® Via J.F.Kennedy, 107 30027 San Donà di Piave VENEZIA - ITALY T. +39 0421 65422 F. +39 0421 308084 info@cimento.tech www.cimento-collection.com							
			DESCRIPTION: RIVA FORMELLA-CIMENTO-CIMENTO - VEDI TABELLA FINITURE-DIM.149x199xH							
			MATERIAL: CIMENTO	FINISHING: CIMENTO - VEDI TABELLA FINITURE						
GENERAL TOLERANCE UNI EN 22768 m			MAX LINEAR DEVIATION mm	DATE: 02/05/2024						
0.5-3	3-6	6-30	30-120	120-400	400-1000	1000-2000	DATE: 02/05/2024	APPROVED:	WEIGHT: N/A	AREA mq:
± 0.1	± 0.1	± 0.2	± 0.3	± 0.5	± 0.8	± 1.2	SCALE: 1 : 2	N°TAV. 1	FORM. TAV. A2	REFERENCE:
Reproduction or publication of this document, in whole or in part, shall be subject to prior authorization by SAI Industry srl (Art. 2578 of Law no. 633 dated 22/04/41 of the C.C.).			DRAWER: MN							CODE: CRVFO02-V00



REV	DATE	DRAWER	DESCRIPTION	NOTICE				
			CIMENTO® Via J.F.Kennedy, 107 30027 San Donà di Piave VENEZIA - ITALY T. +39 0421 65422 F. +39 0421 308084 info@cimento.tech www.cimento-collection.com					
			DESCRIPTION: RIVA FORMELLA-CIMENTO-CIMENTO - VEDI TABELLA FINITURE-DIM.299x74xH					
			MATERIAL: CIMENTO	FINISHING: CIMENTO - VEDI TABELLA FINITURE				
GENERAL TOLERANCE UNI EN 22768 m MAX LINEAR DEVIATION mm			DATE: 02/05/2024	APPROVED:				
0.5-3	3-6	6-30	30-120	120-400	400-1000	1000-2000	WEIGHT: N/A	AREA mq:
±0.1	±0.1	±0.2	±0.3	±0.5	±0.8	±1.2		
Reproduction or publication of this document, in whole or in part, shall be subject to prior authorization by SAI Industry srl (Art. 2578 of Law no. 633 dated 22/04/41 of the C.C.).			SCALE: 1 : 2	N°TAV. 1	FORM. TAV. A2	REFERENCE:		
			DRAWER: MN			CODE: CRVFO03-V00		

CONTACTS

HEADQUARTER/SHOWROOM

Via J.F. Kennedy, 107/a - 30027
San Donà di Piave - VE - IT
Tel. +39 0421 65422

SHOWROOMS

IT

Via Borgogna, 7 - 20122
Milano - IT
showroom@cimento.tech
Tel. +39 02 82772692

CH

Piazza Santa Lucia, 7 - 6900
Massagno LVGA- CH

UK

The Cube Building | 17-21
Wenlock Road - N1 7GT
London- UK

info@cimento.tech



www.cimento.tech

Tutte le informazioni contenute in questa brochure sono soggette a cambiamenti. Tutti i diritti sono riservati. Nessuna parte di questa brochure può essere riprodotta senza il nostro permesso scritto.

All the information on this brochure are subject to changes. All rights reserved. Reproduction in whole or in part of the contents of this brochure is prohibited without our written consent.

Rev. 11giu2024

©CIMENTO®



www.cimento.tech